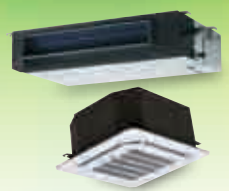


# KoolKing™

DUCTLESS MINI-SPLITS  
SINGLE & MULTI-ZONE  
HORIZONTAL AIR CONDITIONERS  
PORTABLE UNITS  
FREE MATCH COMPONENTS



AN EXCELLENT CHOICE IN COOLING, COMFORT AND CONVENIENCE

# Why choose a Mini-Split system?

Installing or expanding an existing air conditioning and heating system with its associated ductwork can be a daunting and expensive undertaking. With a mini-split (ductless) system, you benefit from the comfort of central air conditioning and heating in a convenient, economical, energy-efficient package.



**The condenser portion of the system is conveniently placed outside... with lines connecting to the wall-mounted unit indoors.**

## Easy to Install

Rather than running additional ductwork through a home or workplace setting, our wall-mounted mini-split units can be installed in as little as an hour using just one small structural hole in the wall. The condenser portion of the system is conveniently placed outside, with lines connecting to the wall-mounted unit. Because this unit is not placed within the home or in a window, mini-split systems offer an extremely quiet cooling option.

## Energy Savings



All of our products are designed to be energy efficient, with SEERs (seasonal energy efficiency ratings) that meet and in many cases exceed the governmental standard of 13. Our inverter technology brings the SEER up to 21 while enhancing comfort and minimizing temperature fluctuations. Many of our models have earned the Energy Star® seal, which is recognized as the leading international rating standard for energy-efficient consumer products. We also offer solar models that harness the sun's energy for even greater savings and environmental protection.

## Options to Meet Your Needs

Our mini-split options include a wide range of cooling and heating capacities depending on your needs. If you need to cool multiple zones, several indoor wall-mounted units can be linked to one condenser and operated independently of each other, giving you even greater temperature control.

## Warranty

Warranty on all Kool King systems from date of purchase, one year on all parts plus an additional 4 years on compressor.

## Saving You Money

Mini-split systems offer the advantages of central air conditioning without the associated costs. They're not only designed to be efficient, but they also save money through:

- Lower installation costs
- Greater control over individual room temperatures
- Lower costs on electric bills

## Find the Mini-Split unit that's right for you

Measure your room dimensions:  
Length x Width = Square Feet

Choose recommended BTU size from the chart:

| Area to be cooled (square feet) | Recommended BTU |
|---------------------------------|-----------------|
| 100 – 150                       | 5,000           |
| 150 – 250                       | 6,000           |
| 250 – 300                       | 7,000           |
| 300 – 350                       | 8,000           |
| 350 – 400                       | 9,000           |
| 400 – 450                       | 10,000          |
| 450 – 550                       | 12,000          |
| 550 – 700                       | 14,000          |
| 700 – 1,000                     | 18,000          |
| 1,000 – 1,200                   | 21,000          |
| 1,200 – 1,400                   | 23,000          |
| 1,400 – 1,500                   | 24,000          |
| 1,500 – 2,000                   | 30,000          |
| 2,000 – 2,500                   | 34,000          |



**BEDROOMS**



**RETAIL SPACE**



**RESTAURANTS**

# Mini-Split systems are a great choice for

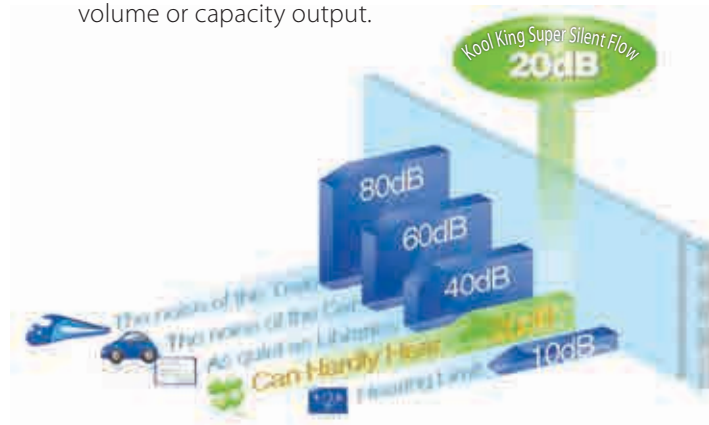
- Home additions
- Garage renovations
- Sunrooms
- Warehouse offices
- Small-scale new construction
- Apartment buildings
- Retail space
- Storage facilities
- Bedrooms
- Office and work settings
- Schools
- Rooms without: Ductwork, Windows, Exterior Walls
- Family rooms
- Restaurants
- Medical facilities

## Comfort



### Low Noise Airflow System

A large diameter cross-flow fan further minimizes noise by allowing a lower fan speed without impacting airflow volume or capacity output.



**Turbo Operation** - With this function, the air conditioner will maximize the output of cooling or heating capacity, allowing the room to cool down or heat up rapidly, and attain the desired temperature in the shortest amount of time.

## Convenience



**Timer** - The timer can be set to start and stop at any point in a 24-hour period.



**Auto-Restart** - If power is interrupted, the unit will automatically restart with the previous settings when power resumes.



**Washable Filter** - Allows for easy cleaning, ensuring maximum operating efficiency.

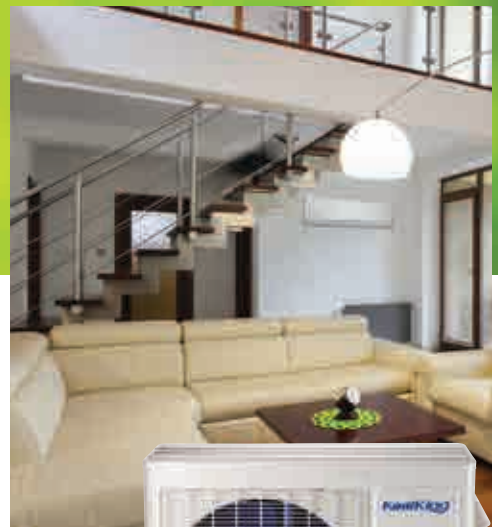


**Two-Way Piping Connection** - For greater installation convenience, connective piping and drainage hosing can be attached to the left or the right side of the indoor unit.



**Low Ambient Cooling** - This built-in kit allows the air conditioner to be used in temperatures as low as 5°F (-15° C) for cooling.

# Ductless Split Systems Fairwind Series



## Standard Features



Heating Belt (Outdoor)



Cold Catalyst Filter



VLED Display



Turbo Mode



Heating Belt (Outdoor)



Temp Compensation



Sleep Mode



## Low Ambient Cooling Function

A special design allows the unit to operate down to -15°C.

With low ambient cooling function, the outdoor fan speed can be changed according to outdoor temperature and the AC can run smoothly under the temperature as low as -15°C. No additional kit required.



# Up to 20 SEER Heat Pump Inverter

| SPECIFICATION                       |                             |  |                                       |  |  |                |
|-------------------------------------|-----------------------------|--|---------------------------------------|--|--|----------------|
| Model No.                           | Indoor Unit<br>Outdoor Unit | MS12F-09HRFN1-MT0W(A)<br>MOB-09HFN1-MT0W | MS12F-12HRFN1-MT0W<br>MOZ-12HFN1-MT0W | MS12F1-17HRFN1-MT0W<br>MOF-17HFN1-MT0W | MS12F1-22HRFN1-MS0W<br>MOY-22HFN1-MS0W |                |
| CAPACITY & PERFORMANCE              |                             |  |                                       |  |  |                |
| Cooling Capacity                    | Btu/h                       | 9000                                     | 11500                                 | 17000                                  | 22000                                  |                |
| SEER                                | Btu/w                       | 20                                       | 20                                    | 20                                     | 20                                     |                |
| Heating Capacity                    | Btu/h                       | 9500                                     | 12000                                 | 18000                                  | 24000                                  |                |
| HSPF4                               | Btu/w                       | 10                                       | 9.6                                   | 9.6                                    | 9.6                                    |                |
| Indoor Noise Level (Hi/Mi/Lo)       | dB(A)                       | 41/37/31                                 | 41/37/31                              | 48/46/40                               | 48/46/40                               |                |
| ELECTRICAL PARTS                    |                             |  |                                       |  |  |                |
| Power Supply                        | V~,Hz,Ph                    | 208-230, 60, 1                           | 208-230, 60, 1                        | 208-230, 60, 1                         | 208-230, 60, 1                         |                |
| Minimum Circuit Ampacity            | A                           | 7.5                                      | 15.0                                  | 14.0                                   | 15.0                                   |                |
| Max. Fuse                           | A                           | 15.0                                     | 15.0                                  | 20.0                                   | 25.0                                   |                |
| DIMENSION & WEIGHT                  |                             |  |                                       |  |  |                |
| Net Dimension<br>(WxDxH)            | Indoor                      | mm                                       | 800x188x275                           | 800x188x275                            | 1045x235x315                           | 1045x235x315   |
|                                     |                             | inch                                     | 31.5x7.4x10.8                         | 31.5x7.4x10.8                          | 41.1x9.3x12.4                          | 41.1x9.3x12.4  |
|                                     | Outdoor                     | mm                                       | 780x250x540                           | 810x310x558                            | 845x320x700                            | 945x395x810    |
|                                     |                             | inch                                     | 30.7x9.8x21.3                         | 31.9x12.2x22.0                         | 33.3x12.6x27.6                         | 37.2x15.6x31.9 |
| Packing Dimension Indoor<br>(WxDxH) | Indoor                      | mm                                       | 865x265x350                           | 865x265x350                            | 1135x395x315                           | 1135x395x315   |
|                                     |                             | inch                                     | 34.1x10.4x13.8                        | 34.1x10.4x13.8                         | 44.7x11.6x12.4                         | 44.7x11.6x12.4 |
|                                     | Outdoor                     | mm                                       | 910x335x585                           | 930x400x615                            | 965x395x755                            | 1090x475x855   |
|                                     |                             | inch                                     | 35.8x13.2x23.0                        | 36.6x15.8x24.2                         | 38.0x15.6x29.7                         | 42.9x18.7x33.7 |
| Net Weight                          | Indoor                      | kg/lbs                                   | 8.0/17.6                              | 8.0/17.6                               | 12/26.5                                | 12/26.5        |
|                                     |                             | kg/lbs                                   | 28/61.7                               | 37/81.4                                | 46.5/102.5                             | 63/138.0       |
| Gross Weight                        | Indoor                      | kg/lbs                                   | 10.0/22.1                             | 10.0/22.1                              | 15.5/34.2                              | 26.5/34.2      |
|                                     |                             | kg/lbs                                   | 30/66.1                               | 39.8/87.6                              | 50.5/111.3                             | 67.5/148.5     |
|                                     | Outdoor                     | kg/lbs                                   |                                       |  |  |                |
|                                     |                             | kg/lbs                                   |                                       |  |  |                |
| REFRIGERANT & PIPING                |                             |  |                                       |  |  |                |
| Refrigerant R410A                   | g/oz                        | 1200/42.3                                | 1150/40.6                             | 1650/58.2                              | 2350/82.9                              |                |
| Piping Size - Liquid Side/Gas Side  | mm (inch)                   | Ø6.35/Ø9.52(1/4"/3/8")                   | Ø6.35/Ø12.7(1/4"/1/2")                | Ø6.35/Ø12.7(1/4"/1/2")                 | Ø9.52/Ø15.9(3/8"/5/8")                 |                |

# Ductless Split Systems

## Oasis Series



### Standard Features



Heating Belt (Outdoor)



Auto Restart Function



Turbo Mode



Cold Catalyst Filter



Auto Swing



Timer



Louver Position Memory Function



Refrigerant Leakage Detect



Low Ambient Cooling



### Low Ambient Cooling Function

A special design allows the unit to operate down to -15°C.

With low ambient cooling function, the outdoor fan speed can be changed according to outdoor temperature and the AC can run smoothly under the temperature as low as -15°C. No additional kit required.

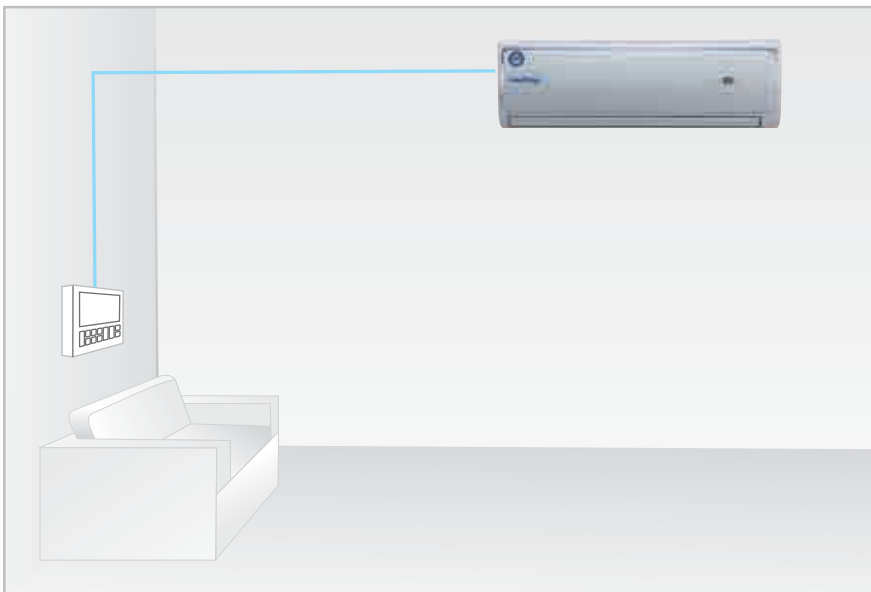


# 18 SEER Heat Pump Inverter



**! While Supplies Last**

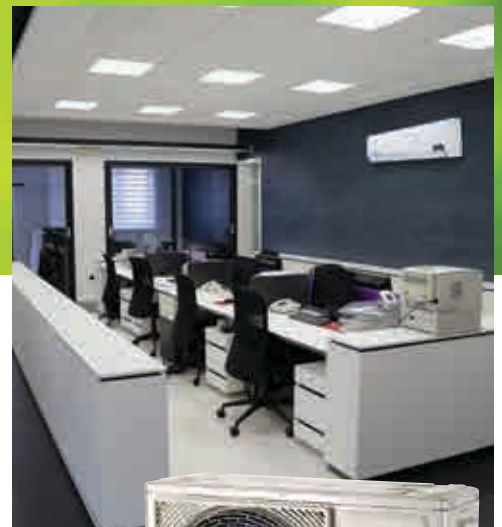
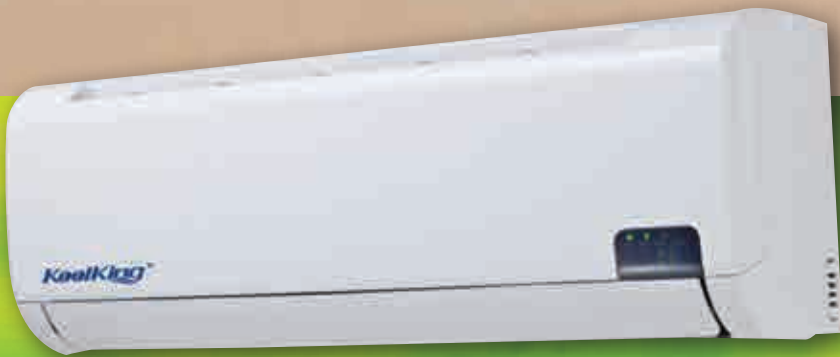
| SPECIFICATION                       |              |                    |                            |                            |                            |                            |                          |                          |
|-------------------------------------|--------------|--------------------|----------------------------|----------------------------|----------------------------|----------------------------|--------------------------|--------------------------|
| Model No.                           | Indoor Unit  | MS11M-09HRFN1-BROW | MS11M-12HRFN1-BROW         | MS11M-18HRFN1-MROW         | MS11M-23HRDN1-MROW         | MS11M-28HRFN1-MROW         | MS11M-33HRFN1-MN10W      |                          |
|                                     | Outdoor Unit | MOB-09HFN1-BROW    | MOZ-12HFN1-BROW            | MOF-18HFN1-MROW            | MOG-23HFN1-MROW            | MOY-28HFN1-MROW            | MOY-33HFN1-MNOW          |                          |
| CAPACITY & PERFORMANCE              |              |                    |                            |                            |                            |                            |                          |                          |
| Cooling Capacity                    | Btu/h        | 9000               | 12000                      | 17500                      | 23000                      | 28500                      | 33000                    |                          |
| SEER                                | Btu/w        | 18                 | 19                         | 21                         | 19                         | 18                         | 15                       |                          |
| Heating Capacity                    | Btu/h        | 9500               | 12500                      | 18000                      | 24000                      | 32000                      | 35500                    |                          |
| HSPF4                               | Btu/w        | 7.5                | 7.5                        | 7.2                        | 7.2                        | 9.6                        | 9.6                      |                          |
| Indoor Noise Level (Hi/Mi/Lo)       | dB(A)        | 42/38/27           | 41/35/27                   | 47/40/31                   | 50/45/40                   | 51/45.5/40                 | 50.5/45/39               |                          |
| ELECTRICAL PARTS                    |              |                    |                            |                            |                            |                            |                          |                          |
| Power Supply                        | V~,Hz,Ph     | 115, 60, 1         | 115, 60, 1                 | 208-230, 60, 1             | 208-230, 60, 1             | 208-230, 60, 1             | 208-230, 60, 1           |                          |
| Minimum Circuit Ampacity            | A            | 18.0               | 18.0                       | 13.0                       | 15.0                       | 15.0                       | 20.0                     |                          |
| Max. Fuse                           | A            | 30.0               | 30.0                       | 20.0                       | 25.0                       | 25.0                       | 30.0                     |                          |
| DIMENSION & WEIGHT                  |              |                    |                            |                            |                            |                            |                          |                          |
| Net Dimension<br>(WxDxH)            | Indoor       | mm                 | 750x198x280                | 835x198x280                | 990x218x315                | 1186x258x343               | 1186x258x343             | 1186x258x343             |
|                                     |              | inch               | 29.53x7.80x11.02           | 32.87x7.80x11.02           | 38.98x8.58x12.40           | 46.69x10.16x13.50          | 46.69x10.16x13.50        | 46.69x10.16x13.50        |
|                                     | Outdoor      | mm                 | 780x250x540                | 810x310x558                | 845x320x700                | 900x315x860                | 945x395x810              | 945x395x810              |
|                                     |              | inch               | 30.71x9.84x21.26           | 31.89x12.20x21.97          | 33.27x12.60x27.56          | 35.43x12.40x33.86          | 37.20x15.55x31.89        | 37.20x15.55x31.89        |
| Packing Dimension Indoor<br>(WxDxH) | Indoor       | mm                 | 830x270x355                | 910x270x355                | 1065x300x400               | 1265x420x340               | 1265x420x340             | 1265x420x340             |
|                                     |              | inch               | 32.68x10.63x13.98          | 35.83x10.63x13.98          | 41.93x11.81x15.75          | 49.80x16.53x13.39          | 49.80x16.53x13.39        | 49.80x16.53x13.39        |
|                                     | Outdoor      | mm                 | 910x335x585                | 930x400x615                | 965x395x755                | 1043x395x915               | 1090x475x855             | 1090x475x855             |
|                                     |              | inch               | 35.83x13.19x23.03          | 36.61x15.75x24.21          | 37.99x15.55x29.72          | 41.06x15.55x36.02          | 42.91x18.70x33.66        | 42.91x18.70x33.66        |
| Net Weight                          | Indoor       | kg/lbs             | 8.0/17.64                  | 9/19.84                    | 12/26.46                   | 18.5/40.79                 | 18.2/40.12               | 18.2/40.12               |
|                                     | Outdoor      | kg/lbs             | 33/72.75                   | 37/81.57                   | 46.5/102.51                | 59/130.07                  | 57.6/126.98              | 70.3/154.98              |
| Gross Weight                        | Indoor       | kg/lbs             | 10.5/23.15                 | 11.5/25.35                 | 14/30.86                   | 23/50.71                   | 22.8/50.26               | 22.8/50.26               |
|                                     | Outdoor      | kg/lbs             | 35.5/78.26                 | 39/85.98                   | 50.5/111.33                | 63/138.89                  | 62.2/137.13              | 74.9/165.12              |
| REFRIGERANT & PIPING                |              |                    |                            |                            |                            |                            |                          |                          |
| Refrigerant R410A                   | g/oz         |                    | 1200/42.33                 | 1250/44.09                 | 1900/67.0                  | 2430/85.7                  | 2250/79.36               | 3000/105.82              |
| Piping Size - Liquid Side/Gas Side  | mm (inch)    |                    | Ø6.35/Ø9.52<br>(1/4"/3/8") | Ø6.35/Ø12.7<br>(1/4"/1/2") | Ø6.35/Ø12.7<br>(1/4"/1/2") | Ø9.52/Ø15.9<br>(3/8"/5/8") | Ø9.52/Ø16<br>(3/8"/5/8") | Ø9.52/Ø16<br>(3/8"/5/8") |



### Wired Controller (Optional)

Compared with infrared remote controller, wired controller can be fixed on the wall and avoid mislaying. It's mainly used for commercial zone and makes air conditioner control more convenient.

# Ductless Split Systems Luna Series



## Standard Features



Auto Restart Function



Turbo Mode



Temp Compensation



Cold Catalyst Filter



Sleep Mode



## Low Ambient Cooling Function

A special design allows the unit to operate down to -15°C.

With low ambient cooling function, the outdoor fan speed can be changed according to outdoor temperature and the AC can run smoothly under the temperature as low as -15°C. No additional kit required.





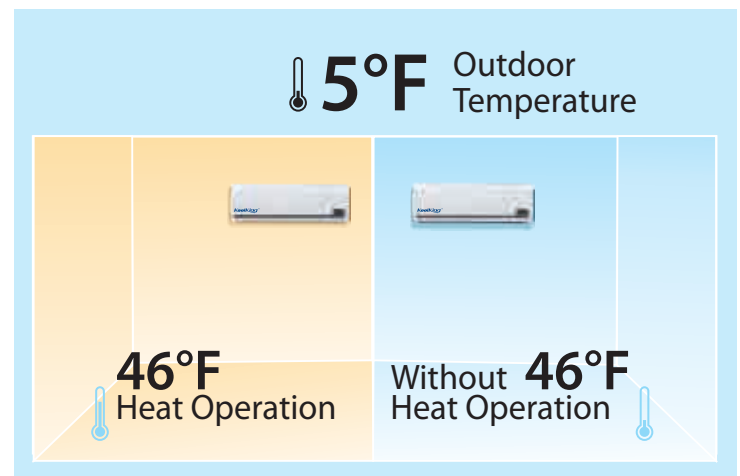
# 16 SEER Heat Pump Inverter

| SPECIFICATION                       |              |        |                        |
|-------------------------------------|--------------|--------|------------------------|
| Model No.                           | Indoor Unit  |        | MSC-30HRDN1-MP0W       |
|                                     | Outdoor Unit |        | MOG-30HDN1-MP0W        |
| CAPACITY & PERFORMANCE              |              |        |                        |
| Cooling Capacity                    | Btu/h        |        | 30000                  |
| SEER                                | Btu/w        |        | 16                     |
| Heating Capacity                    | Btu/h        |        | 30000                  |
| HSPF4                               | Btu/w        |        | 9.6                    |
| Indoor Noise Level (Hi/Mi/Lo)       | dB(A)        |        | 50/47/43               |
| ELECTRICAL PARTS                    |              |        |                        |
| Power Supply                        | V~,Hz,Ph     |        | 230, 60, 1             |
| Minimum Circuit Ampacity            | A            |        | 16.0                   |
| Max. Fuse                           | A            |        | 25.0                   |
| DIMENSION & WEIGHT                  |              |        |                        |
| Net Dimension<br>(WxDxH)            | Indoor       | mm     | 1445x277x340           |
|                                     |              | inch   | 56.89x10.91x13.39      |
|                                     | Outdoor      | mm     | 900x315x860            |
|                                     |              | inch   | 35.43x12.40x33.86      |
| Packing Dimension Indoor<br>(WxDxH) | Indoor       | mm     | 1530x420x365           |
|                                     |              | inch   | 60.24x16.54x14.37      |
|                                     | Outdoor      | mm     | 1043x395x915           |
|                                     |              | inch   | 41.06x15.55x36.02      |
| Net Weight                          | Indoor       | kg/lbs | 24/52.91               |
|                                     |              | kg/lbs | 71/156.53              |
| Gross Weight                        | Indoor       | kg/lbs | 32/70.55               |
|                                     |              | kg/lbs | 75/165.35              |
| REFRIGERANT & PIPING                |              |        |                        |
| Refrigerant R410A                   | g/oz         |        | 2550/89.94             |
| Piping Size - Liquid Side/Gas Side  | mm (inch)    |        | Ø9.52/Ø15.9(3/8"/5/8") |



## Ionizer

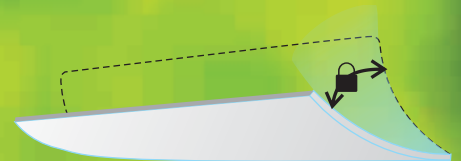
KoolKing air conditioners take advantage of Ionizer Technology to bring the refreshing air to your home.



## Freeze Protection

In heating operation, the preset temperature of the air conditioner can be as low as 46°F, which keeps the room temperature steady at 46°F and prevents household from freezing when the house is vacant for a long time in severe cold weather.

# Ductless Split Systems Neola Series



### Louver Position Memory Function

Horizontal louvers will automatically move to the same position as you set last time when the unit turned on.



## Standard Features



Auto Restart Function



Temp Compensation



Cold Catalyst Filter



Refrigerant Leakage Detect



Turbo Mode



Louver Position Memory Function



Sleep Mode



2 Ways Draining Connection



## Low Ambient Cooling Function

A special design allows the unit to operate down to -15°C.

With low ambient cooling function, the outdoor fan speed can be changed according to outdoor temperature and the AC can run smoothly under the temperature as low as -15°C. No additional kit required.



### 2 Ways Draining Connection

Both left and right sides of the indoor unit are possible for outstretch if connective piping and drainage hose.

# 15 SEER Cooling Inverter

| SPECIFICATION                       |                             |   |   |   |   |                   |
|-------------------------------------|-----------------------------|---|---|---|---|-------------------|
| Model No.                           | Indoor Unit<br>Outdoor Unit | MS11D-09CRDN1-BN10W<br>MOR-09CDN1-BN10W | MS11D-12CRDN1-BN10W<br>MOR-12CDN1-BN10W | MS11D-18CRDN1-MN10W<br>MOC-18CDN1-MN10W | MS11D-22CRDN1-MN10W<br>MOF-22CDN1-MN10W |                   |
| CAPACITY & PERFORMANCE              |                             |   |   |   |   |                   |
| Cooling Capacity                    | Btu/h                       | 9000 (2250~10000)                       | 12000 (2600~13500)                      | 18000 (5300~22000)                      | 22000 (6500~25000)                      |                   |
| SEER                                | Btu/w                       | 15                                      | 15                                      | 15                                      | 15                                      |                   |
| Heating Capacity                    | Btu/h                       | -                                       | -                                       | -                                       | -                                       |                   |
| HSPF4                               | Btu/w                       | -                                       | -                                       | -                                       | -                                       |                   |
| Indoor Noise Level (Hi/Mi/Lo)       | dB(A)                       | 39/35/28                                | 39/35/29                                | 42/39/31                                | 47/45/39                                |                   |
| ELECTRICAL PARTS                    |                             |   |   |   |   |                   |
| Power Supply                        | V~,Hz,Ph                    | 115,60,1                                | 115,60,1                                | 208-230,60,1                            | 208-230,60,1                            |                   |
| Minimum Circuit Ampacity            | A                           | 19.0                                    | 20.0                                    | 14.0                                    | 16.0                                    |                   |
| Max. Fuse                           | A                           | 30.0                                    | 30.0                                    | 20.0                                    | 25.0                                    |                   |
| DIMENSION & WEIGHT                  |                             |   |   |   |   |                   |
| Net Dimension<br>(WxDxH)            | Indoor                      | mm                                      | 680x178x255                             | 770x188x255                             | 905x198x275                             | 1030x218x315      |
|                                     |                             | inch                                    | 26.77x7.01x10.04                        | 30.31x7.40x10.04                        | 35.63x7.80x10.83                        | 40.55x8.58x12.40  |
|                                     | Outdoor                     | mm                                      | 660x265x540                             | 660x265x540                             | 760x285x590                             | 845x320x700       |
|                                     |                             | inch                                    | 25.98x10.43x21.26                       | 25.98x10.43x21.26                       | 29.92x11.22x23.23                       | 33.27x12.60x27.56 |
| Packing Dimension Indoor<br>(WxDxH) | Indoor                      | mm                                      | 745x255x330                             | 835x265x330                             | 970x270x345                             | 1115x395x300      |
|                                     |                             | inch                                    | 29.33x10.04x12.99                       | 32.87x10.43x12.99                       | 38.19x11.22x13.23                       | 43.90x15.55x11.81 |
|                                     | Outdoor                     | mm                                      | 790x355x620                             | 790x355x620                             | 887x355x645                             | 965x395x755       |
|                                     |                             | inch                                    | 31.10x13.98x24.41                       | 31.10x13.98x24.41                       | 34.92x13.98x25.39                       | 37.99x15.55x29.72 |
| Net Weight                          | Indoor                      | kg/lbs                                  | 7/15.43                                 | 7.5/16.53                               | 9/19.84                                 | 12/26.46          |
|                                     |                             | kg/lbs                                  | 28.5/62.83                              | 29.5/65.04                              | 34.5/76.06                              | 44.5/98.11        |
| Gross Weight                        | Indoor                      | kg/lbs                                  | 8/17.64                                 | 9.5/20.94                               | 11.5/25.35                              | 15/33.07          |
|                                     |                             | kg/lbs                                  | 31.5/69.45                              | 32.5/71.65                              | 37/81.57                                | 48/105.82         |
|                                     | Outdoor                     | kg/lbs                                  |   |   |   |                   |
|                                     |                             | kg/lbs                                  |   |   |   |                   |
| REFRIGERANT & PIPING                |                             |   |   |   |   |                   |
| Refrigerant R410A                   | g/oz                        | 900/31.8                                | 900/31.8                                | 850/29.9                                | 1180/41.6                               |                   |
| Piping Size - Liquid Side/Gas Side  | mm (inch)                   | Ø6.35/Ø9.52 (1/4" / 3/8")               | Ø6.35/Ø12.7 (1/4" / 1/2")               | Ø6.35/Ø12.7 (1/4" / 1/2")               | Ø9.52/Ø15.9 (3/8" / 5/8")               |                   |

# 15 SEER Heat Pump Inverter

| SPECIFICATION                      |                             |   |   |   |   |                   |
|------------------------------------|-----------------------------|---|---|---|---|-------------------|
| Model No.                          | Indoor Unit<br>Outdoor Unit | MS11D-09HRDN1-BN10W<br>MOR-09HDN1-BN10W | MS11D-12HRDN1-BN10W<br>MOR-12HDN1-BN10W | MS11D-18HRDN1-MN10W<br>MOC-18HDN1-MN10W | MS11D-22HRDN1-MN10W<br>MOF-22HDN1-MN10W |                   |
| CAPACITY & PERFORMANCE             |                             |   |   |   |   |                   |
| Cooling Capacity                   | Btu/h                       | 9000 (2250~10000)                       | 12000 (2600~13500)                      | 18000 (5300~22000)                      | 22000 (6500~25000)                      |                   |
| SEER                               | Btu/w                       | 15                                      | 15                                      | 15                                      | 15                                      |                   |
| Heating Capacity                   | Btu/h                       | 9000 (2300~11000)                       | 12000 (2800 ~ 15500)                    | 18000 (5500~23000)                      | 22000(6500~25000)                       |                   |
| HSPF4                              | Btu/w                       | 8.2                                     | 8.2                                     | 8.2                                     | 8.2                                     |                   |
| Indoor Noise Level (Hi/Mi/Lo)      | dB(A)                       | 39/35/29                                | 39/35/29                                | 42/39/31                                | 49/45/39                                |                   |
| ELECTRICAL PARTS                   |                             |   |   |   |   |                   |
| Power Supply                       | V~,Hz,Ph                    | 115,60,1                                | 115,60,1                                | 208-230,60,1                            | 208-230,60,1                            |                   |
| Minimum Circuit Ampacity           | A                           | 19.0                                    | 20.0                                    | 14.0                                    | 16.0                                    |                   |
| Max. Fuse                          | A                           | 30.0                                    | 30.0                                    | 20.0                                    | 25.0                                    |                   |
| DIMENSION & WEIGHT                 |                             |   |   |   |   |                   |
| 680x178x255<br>26.77x7.01x10.04    | Indoor                      | mm                                      | 680x178x255                             | 770x188x255                             | 905x198x275                             | 1030/218/315      |
|                                    |                             | inch                                    | 26.77x7.01x10.04                        | 30.31x7.40x10.04                        | 35.63x7.80x10.83                        | 40.55x8.58x12.40  |
| 660x265x540<br>25.98x10.43x21.26   | Outdoor                     | mm                                      | 660x265x540                             | 660x265x540                             | 760x285x590                             | 845x320x700       |
|                                    |                             | inch                                    | 25.98x10.43x21.26                       | 25.98x10.43x21.26                       | 29.92x11.22x23.23                       | 33.27x12.60x27.56 |
| 745x255x330<br>29.33x10.04x12.99   | Indoor                      | mm                                      | 745x255x330                             | 835x265x330                             | 970x270x345                             | 1115x395x300      |
|                                    |                             | inch                                    | 29.33x10.04x12.99                       | 32.87x10.43x12.99                       | 38.19x10.63x13.58                       | 43.90x15.55x11.81 |
| 790x355x620<br>31.10x13.98x24.41   | Outdoor                     | mm                                      | 790x355x620                             | 790x355x620                             | 887x355x645                             | 965x395x755       |
|                                    |                             | inch                                    | 31.10x13.98x24.41                       | 31.10x13.98x24.41                       | 34.92x13.98x25.39                       | 37.99x15.55x29.72 |
| 7/15.43<br>29/69.93                | Indoor                      | kg/lbs                                  | 7/15.43                                 | 7.5/16.53                               | 9/19.84                                 | 12/26.46          |
|                                    |                             | kg/lbs                                  | 29/69.93                                | 30/66.14                                | 37.5/82.67                              | 47/103.62         |
| 8/17.64<br>32/70.55                | Indoor                      | kg/lbs                                  | 8/17.64                                 | 9.5/20.94                               | 11.5/25.35                              | 15/33.07          |
|                                    |                             | kg/lbs                                  | 32/70.55                                | 32/70.55                                | 40/88.18                                | 50.5/111.33       |
|                                    | Outdoor                     | kg/lbs                                  |   |   |   |                   |
|                                    |                             | kg/lbs                                  |   |   |   |                   |
| REFRIGERANT & PIPING               |                             |   |   |   |   |                   |
| Refrigerant R410A                  | g/oz                        | 900/31.8                                | 950/33.57                               | 1200/42.3                               | 1600/56.44                              |                   |
| Piping Size - Liquid Side/Gas Side | mm (inch)                   | Ø6.35/Ø9.52 (1/4" / 3/8")               | Ø6.35/Ø12.7 (1/4" / 1/2")               | Ø6.35/Ø12.7 (1/4" / 1/2")               | Ø9.52/Ø15.9 (3/8" / 5/8")               |                   |

## Air Conditioners

# Horizontal Discharge, 24 Volt

Horizontal condenser is compact in size to fit in tight spaces without detracting from landscaping and outdoor living areas. Ultra quiet operation is rated as low as 59 decibels



### SPECIFICATION

|           |  |                |                |                |                |
|-----------|--|----------------|----------------|----------------|----------------|
| Model No. |  | MOF-18CN1-MMOW | MOG-24CN1-MMOW | MOJ-30CN1-MMOW | MOU-36CN1-MMOW |
|-----------|--|----------------|----------------|----------------|----------------|

### CAPACITY & PERFORMANCE

|                     |       |       |       |       |       |
|---------------------|-------|-------|-------|-------|-------|
| Cooling Capacity    | Btu/h | 18000 | 24000 | 30000 | 36000 |
| Outdoor Noise Level | dB(A) | 59    | 59    | 62    | 62    |

### ELECTRICAL PARTS

|                          |          |              |              |              |              |
|--------------------------|----------|--------------|--------------|--------------|--------------|
| Power Supply             | V-Hz- Ph | 208-230,60,1 | 208-230,60,1 | 208-230,60,1 | 208-230,60,1 |
| Max. Fuse                | A        | 15           | 20           | 25           | 35           |
| Minimum Circuit Ampacity | A        | 9            | 11.6         | 16           | 21.9         |

### DIMENSION & WEIGHT

|              |                   |      |                   |                   |                   |                   |
|--------------|-------------------|------|-------------------|-------------------|-------------------|-------------------|
| Outdoor Unit | Dimension (WxDxH) | mm   | 845x320x700       | 900x315x860       | 990x345x965       | 900x350x1170      |
|              | Dimension (WxDxH) | inch | 33.27x12.6x27.56  | 35.43x12.4x33.86  | 38.98x13.58x37.99 | 35.43x13.78x46.06 |
|              | Packing (WxDxH)   | mm   | 965x395x755       | 1043x395x915      | 1120x435x1100     | 1032x443x1307     |
|              | Packing (WxDxH)   | inch | 37.99x15.55x29.72 | 41.06x15.55x36.02 | 44.09x17.13x43.31 | 40.63x17.44x51.46 |
|              | Net/ Gross weight | kg   | 45/48             | 56/60             | 71/82             | 76/87             |
|              | Net/ Gross weight | lbs. | 99.21/105.82      | 123.46/132.28     | 156.53/180.78     | 167.55/191.8      |

### REFRIGERANT & PIPING

|                    |                          |          |                        |                      |                      |                      |
|--------------------|--------------------------|----------|------------------------|----------------------|----------------------|----------------------|
| Refrigerant Type   | Type                     |          | R410A                  | R410A                | R410A                | R410A                |
|                    | Liquid side/ Gas side    | mm(inch) | Φ6.35/Φ12.7(1/4"/1/2") | Φ9.52/Φ19(3/8"/3/4") | Φ9.52/Φ19(3/8"/3/4") | Φ9.52/Φ19(3/8"/3/4") |
| Refrigerant Piping | Max. pipe length         | m        | 25                     | 25                   | 25                   | 30                   |
|                    | Max. pipe length         | ft       | 82                     | 82                   | 82                   | 98                   |
|                    | Max. difference in level | m        | 15                     | 15                   | 15                   | 20                   |
|                    | Max. difference in level | ft       | 49                     | 49                   | 49                   | 66                   |

## Air Conditioners

# Portable Air Conditioner



No water bucket to empty, Self-diagnosis and auto-protection, Flexible installation kit



### Standard Features



Auto Restart Function



Self-diagnosis & Auto Protection



Flexible Installation



Ionizer



Self-evaporative System



Optional Filter



Sleep Mode



Timer



Washable Filter



PTC Heater



#### Auto Swing

Distributes cool/warm air to a maximum area by moving flaps automatically.



#### Omni-directional Caster

With the integrated swivel casters make this portable unit easier to move.

### SPECIFICATION

Model No. MPN6-12CRN1-BH9 MPN1-12CRN1-BH9

### CAPACITY & PERFORMANCE

|                          |                   |          |                |
|--------------------------|-------------------|----------|----------------|
| Cooling Capability       | Btu/h             | 12000    | 12000          |
|                          | W                 | 3517     | 3517           |
| EER Btu/W.h              | Btu/h/w           | 8.9      | 8.9            |
| EER w/w                  | w/w               | 2.6      | 2.6            |
| Heating Capability       | Btu/h             | —        | —              |
| Heating Capability Input | W                 | —        | —              |
| Air Flow Volume          | m <sup>3</sup> /h | 420      | 438            |
| Air Flow Volume CFM      | CFM               | 247      | 257            |
| Noise Level              | dB(A)             | 56/55/53 | 57.8/55.9/54.3 |

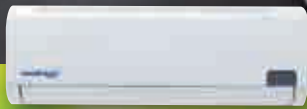
### ELECTRICAL PARTS

|                       |            |            |            |
|-----------------------|------------|------------|------------|
| Power Supply          | V~, Hz, Ph | 115, 60, 1 | 115, 60, 1 |
| Power Input (W)       | Cooling    | 1350       | 1340       |
|                       | Heater     | —          | —          |
| Operating Current (A) | Cooling    | 11.9       | 11.9       |

### DIMENSION & WEIGHT

|                                |            |                        |                |
|--------------------------------|------------|------------------------|----------------|
| Unit Dimension mm (WxDxH)      | Millimeter | 430x360x707            | 430x338x707    |
| Unit Dimension inch (WxDxH)    | Inches     | 17x14-3/16x27-13/16    | 16.9x13.3x27.8 |
| Packing Dimension mm (WxDxH)   | Millimeter | 492x402x880            | 492x402x880    |
| Packing Dimension inch (WxDxH) | Inches     | 19-3/8x15-13/16x34-5/8 | 19.4x15.8x34.6 |
| Net/Gross Weight kg            | Kg         | 265/30                 | 29/32.5        |
| Net/Gross Weight lbs           | LBS        | 64/72                  | 63.8/71.5      |

# Free-Match Multi-Zone Systems



Luna Series



Oasis Series



Duct



Compact Cassette



Console



## Outdoor Models

Designed to accommodate units from 12,000 - 36,000 Btu. You have a choice of Highwall, 4-Way Cassette, Ducted or Console indoor units.

## Remote Control

- Operating Mode: AUTO, COOL, DRY, HEAT\* and FAN.
- Timer Setting Function in 24 hours.
- Indoor Setting Temperature Range: 62°F - 140°F
- Full function of LCD (Liquid Crystal Display)

**NEW** **Hard Wired Controller**  
Model # KJR-120C (Optional)

- Free Match Compatible
- Weekly Programming Function



## Low Ambient Cooling Function

A special design allows the unit to operate down to -15°C.

With low ambient cooling function, the outdoor fan speed can be changed according to outdoor temperature and the AC can run smoothly under the temperature as low as -15°C. No additional kit required.

\* HEAT Mode not included on Cooling only models

Free-Match

# Single Zone Outdoor Inverter



## SPECIFICATION

| Model No.                |           | MOZ-12HFN1-MS0W   | MOF-18HFN1-MU0W   | MOG-24HFN1-MT0W   | MOU-36HFN1-M  |
|--------------------------|-----------|---|---|---|---|
|                          |           |  |  |  |  |
| Capacity                 | Btu       | 12,000  | 18,000  | 24,000  | 36,000  |
| Power Supply             | V~,Hz,Ph  | 230,60,1  | 230,60,1  | 208-230,60,1  | 208-230,60,1  |
| Minimum Circuit Ampacity | A         | 8.5   | 14  | 20  | 30  |
| Max. Fuse                | A         | 15.0  | 20  | 30  | 50  |
| Noise Level              | dB(A)     | 55  | 60.5  | 61.5  | 66  |
| Net Dimension            | mm        | 760x285x590   | 845x320x700   | 900x315x860   | 990x345x965   |
| (WxDxH)                  | inch      | 29.92x11.22x23.23   | 33.27x15.55x29.72   | 35.43x12.4x33.86  | 38.98x13.58x37.99   |
| Packing Dimension        | mm        | 887x355x645   | 965x395x755   | 1043x395x915  | 1120x435x1100   |
| (WxDxH)                  | inch      | 34.92x13.98x25.39   | 37.99x15.55x29.72   | 41.06x15.55x36.02   | 44.09x17.13x43.31   |
| Net Weight               | kg/lbs    | 39.5/87.08  | 47.5/104.72   | 61/134.48   | 73/160.94   |
| Gross Weight             | kg/lbs    | 42/92.59  | 51/112.44   | 65/143.3  | 83/182.98   |
| Liquid Size/Gas Size     | mm (inch) | Ø6.35 (1/4") / Ø12.7 (1/2")   | Ø6.35 (1/4") / Ø12.7 (1/2")   | Ø9.52 (3/8") / Ø15.9 (5/8")   | Ø9.52 (3/8") / Ø15.9 (5/8")   |
| Max. Pipe Length         | m (ft)    | 20 (66)   | 25 (82)   | 50 (164)  | 65 (213)  |
| Max. Height Difference   | m (ft)    | 8 (26)  | 10 (33)   | 25 (82)   | 30 (98)   |

Free-Match

# Multi-Zone Outdoor Inverter

## SPECIFICATION

| Model No. |  | M20D-18HFN1-M /<br>M20D-18HFN1-M*<br>1 Drive 2                                      | M30C-30HRFN1-M /<br>M30C-30HRFN1-M**<br>1 Drive 3                                    | M40C-36HRFN1-M /<br>M40C-36HRFN1-M<br>1 Drive 4                                       |  M50C-48HFN1-M<br>1 Drive 5 |
|-----------|--|---|--|---|--|
|           |  |  |  |  |                             |

## CAPACITY & PERFORMANCE

|                    |       | 18000 (7000~19000) | 30000 (7500~34000) | 36000 (9500~43000) | 48000 |
|--------------------|-------|--------------------|--------------------|--------------------|-------|
| Cooling Capacity   | Btu/h | 18000 (7000~19000) | 30000 (7500~34000) | 36000 (9500~43000) | 48000 |
| SEER               | Btu/w | 17                 | 16                 | 16.5               | 20.5  |
| Heating Capacity   | Btu/h | 18000 (8000~21000) | 30000 (7500~36000) | 39000 (9800~44000) | 51000 |
| HSPF4              | Btu/w | 9.0                | 9.0                | 9.0                | 10.0  |
| Indoor Noise Level | dB(A) | 57                 | 63                 | 65                 | 64    |

## ELECTRICAL PARTS

|                          |          | 230,60,1 | 230,60,1 | 230,60,1 | 230,60,1 |
|--------------------------|----------|----------|----------|----------|----------|
| Power Supply             | V~,Hz,Ph | 230,60,1 | 230,60,1 | 230,60,1 | 230,60,1 |
| Minimum Circuit Ampacity | A        | 11.0     | 18.0     | 27.0     | 30.0     |
| Max. Fuse                | A        | 15.0     | 30.0     | 40.0     | 50.0     |

## DIMENSION & WEIGHT

|                   |        | 845x320x700       | 900x315x860       | 990x345x965       | 938x392x1369      |
|-------------------|--------|-------------------|-------------------|-------------------|-------------------|
| Net Dimension     | mm     | 845x320x700       | 900x315x860       | 990x345x965       | 938x392x1369      |
| (WxDxH)           | inch   | 33.27x12.6x27.56  | 35.43x12.40x33.86 | 38.98x13.58x37.99 | 36.93x15.43x53.9  |
| Packing Dimension | mm     | 965x395x755       | 1043x395x915      | 1120x435x1100     | 1095x495x1505     |
| (WxDxH)           | inch   | 37.99x15.55x29.72 | 41.06x15.55x36.02 | 44.09x17.13x43.31 | 43.11x19.49x59.25 |
| Net Weight        | kg/lbs | 53.5/117.95       | 62/136.69         | 81.5/179.67       | 103.3/218/26      |
| Gross Weight      | kg/lbs | 57/125.66         | 67/147.71         | 85.5/188.49       | 115.9/244.71      |

## PIPING SIZE

|                        |           | 2xØ6.35 (1/4")/2xØ9.52 (3/8") | 3xØ6.35 (1/4")/3xØ9.52 (3/8") | 4xØ6.35 (1/4")/4xØ9.52 (3/8") | 5xØ6.35 (1/4")/3xØ9.52 (3/8")<br>2xØ12.7 (1/2") |
|------------------------|-----------|-------------------------------|-------------------------------|-------------------------------|---|
| Liquid Size/Gas Size   | mm (inch) | 2xØ6.35 (1/4")/2xØ9.52 (3/8") | 3xØ6.35 (1/4")/3xØ9.52 (3/8") | 4xØ6.35 (1/4")/4xØ9.52 (3/8") | 5xØ6.35 (1/4")/3xØ9.52 (3/8")<br>2xØ12.7 (1/2") |
| Max. Length            | m (ft)    | 30 (98)                       | 45 (148)                      | 60 (197)                      | 75 (246)  |
| Max. Height Difference | m (ft)    | 10 (33)                       | 10 (33)                       | 10 (33)                       | 10 (33)   |

Note - The data above is the result of testing with Luna series wall mounted (MS9AI-09HRDN1-M(A)) indoor unit.

\* ENERGY STAR Rated when using outdoor model M20D-18HFN1-M with two high wall model MS11M-09HRFN1-MVOM

\*\* ENERGY STAR Rated when using outdoor model M30C-30HRFN1-M with three high wall model MS11M-09HRFN1-MVOM

Free-Match

# Indoor Compact Flow Cassette



## Standard Features



Independent Dehumidification



Timer



Built-In Drain Pump



Sleep Mode



Slim Design



Air Flow Panel



Auto Defrosting



Auto Restart Function



Anti-Cold Air Function

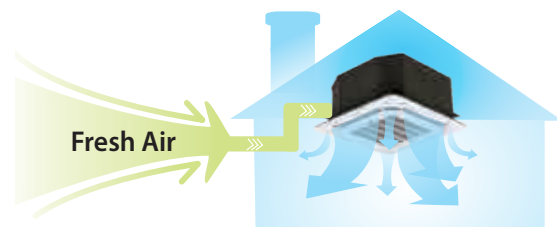
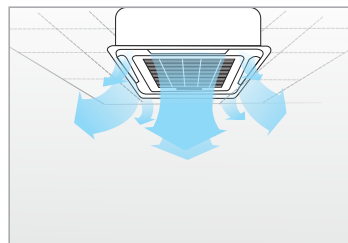
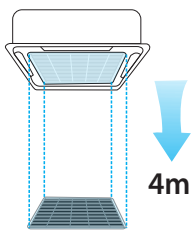


Wide-Angle Air Flow



## SPECIFICATION

| Model No.                         | Indoor Unit*<br>Panel*<br>Outdoor Unit | MCA2U-12HRFN1-M<br>T-MBQ4-03B4<br>MOZ-12HFN1-MS0W | MCA2U-18HRFN1-M<br>T-MBQ4-03B4<br>MOF-18HFN1-MU0W | MCD-24HRFN1-M<br>T-MBQ-02C1<br>MOG-24HFN1-MT0W | MCD-36HRFN1-M<br>T-MBQ-02C1<br>MOU-36HFN1-M |
|-----------------------------------|--|---|---|--|---|
| <b>CAPACITY &amp; PERFORMANCE</b> |  |   |   |  |   |
| Cooling Capacity                  | Btu/h                                  | 12000 (4800~14000)                                | 18000 (6120~19260)                                | 23800 (5400~27000)                             | 36000 (9800~42000)                          |
| SEER                              | Btu/w                                  | 16.5  | 16.5  | 15.8   | 15  |
| Heating Capacity                  | Btu/h                                  | 12400 (4550~15340)                                | 18400 (4800~20800)                                | 23800 (5400~27000)                             | 36000 (9800~42000)                          |
| HSPF4                             | Btu/w                                  | 9.6   | 8.8   | 9.5  | 9   |
| Indoor Noise Level (Hi/Mi/Lo)     | dB(A)                                  | 51/46/40.5  | 51/46/40.5  | 52/47/43                                       | 52/47/44                                    |
| <b>ELECTRICAL PARTS</b>           |  |   |   |  |   |
| Power Supply                      | V~,Hz,Ph                               | 230,60,1  | 230,60,1  | 208-230,60,1                                   | 208-230,60,1                                |
| Minimum Circuit Ampacity          | A                                      | 1.3   | 1.9   | 20   | 1.9   |
| Max. Fuse                         | A                                      | 15  | 15  | 30   | 15  |
| <b>DIMENSION &amp; WEIGHT</b>     |  |   |   |  |   |
| Net Dimension                     | mm                                     | 570x570x260                                       | 570x570x260                                       | 840x840x205                                    | 840x840x205                                 |
| (WxDxH) - Body                    | inch                                   | 22.44x22.44x10.24                                 | 22.44x22.44x10.24                                 | 33.07x33.07x8.07                               | 33.07x33.07x9.65                            |
| Packing Dimension                 | mm                                     | 655x655x290                                       | 655x655x290                                       | 900x900x225                                    | 900x900x265                                 |
| (WxDxH) - Body                    | inch                                   | 25.79x25.79x11.42                                 | 25.79x25.79x11.42                                 | 35.43x35.43x8.86                               | 35.43x35.43x10.43                           |
| Net Dimension                     | mm                                     | 647x647x50  | 647x647x50  | 950x950x55                                     | 950x950x55                                  |
| (WxDxH) - Panel                   | inch                                   | 25.47x25.47x1.97                                  | 25.47x25.47x1.97                                  | 37.4x37.4x2.17                                 | 37.4x37.4x2.17                              |
| Packing Dimension                 | mm                                     | 715x715x123                                       | 715x715x123                                       | 1035x1035x90                                   | 1035x1035x90                                |
| (WxDxH) - Panel                   | inch                                   | 28.15x28.15x4.84                                  | 28.15x28.15x4.84                                  | 40.75x40.75x3.54                               | 40.75x40.75x3.54                            |
| Net Weight - Body                 | kg/lbs                                 | 16/35.27  | 18/39.68  | 20.5/45.19                                     | 25/55.12                                    |
| Net Weight - Panel                | kg/lbs                                 | 2.5/5.51  | 2.5/5.51  | 5/11.02  | 5/11.02                                     |
| Gross Weight - Body               | kg/lbs                                 | 19/41.89  | 21/46.3   | 24/52.91                                       | 28.5/62.83                                  |
| Gross Weight - Panel              | kg/lbs                                 | 4.5/9.92  | 4.5/9.92  | 8/17.64  | 8/17.64                                     |
| Piping Size (mm(inch))            | Liquid                                 | Ø6.35 (1/4")                                      | Ø6.35 (1/4")                                      | Ø9.52 (3/8")                                   | Ø9.52 (3/8")                                |
|                                   | Gas                                    | Ø12.7 (1/2")                                      | Ø12.7 (1/2")                                      | Ø15.9 (5/8")                                   | Ø15.9 (5/8")                                |
|                                   | Drainage                               | ODØ25 (1")  | ODØ25 (1")  | ODØ32 (1 1/4")                                 | ODØ32 (1 1/4")                              |

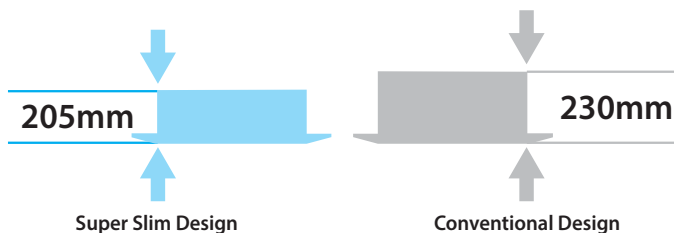


### Lifting Easy-Clean (Optional) & 360° Air Flow Panel

The removable lifting panel makes the clean process much easier. The 360° flow system distributes comfort to every corner of the room.

### Fresh Air Intake

Fresh air intake function gives you fresh and comfortable air feeling.



### E-box Inside

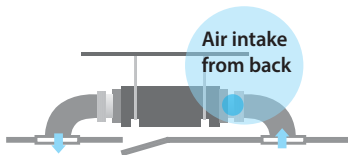
The E-box is simply and safely built inside the indoor unit. This integrated design provides a more compact body size and ease of installation. The maintenance of the E-box is simply by opening the air-return grille.

\* Both Indoor Unit & Panel, need to be ordered together.

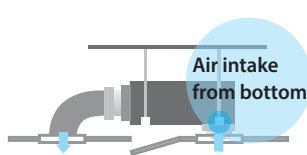
# Free-Match Duct



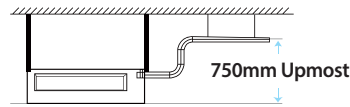
## Standard Features



Air intake from back



Air intake from bottom



750mm Upmost



Duct joint fresh air duct

### Fresh Air

Air inlet from back standard and from bottom optional. The size of the plate from bottom and flange from back is the same, it's easy for installer to change the air inlet from back to bottom.

### Built-in Drain Pump (Optional)

The drain pump can lift the condensing water up to 750mm upmost.

### Fresh Air

Fresh air hole as standard, it's easy to connect with air.



Canvas Air Passage

Front Board

Filter

Panel

### Optional Accessories

Optional accessories are available to meet the different needs of customers and enhance the performance.

## SPECIFICATION

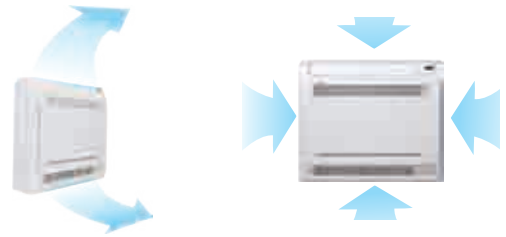
| Model No.                         | Indoor Unit<br>Outdoor Unit | MTBU-12HRDN1-M(B)<br>MOZ-12HFN1-MSOW | MTBU-18HRDN1-M<br>MOF-18HFN1-MU0W |
|-----------------------------------|-----------------------------|--------------------------------------|-----------------------------------|
| <b>CAPACITY &amp; PERFORMANCE</b> |                             |                                      |                                   |
| Cooling Capacity                  | Btu/h                       | 12000 (4770~13100)                   | 18000 (7230~21700)                |
| SEER                              | Btu/w                       | 15.5                                 | 15.5                              |
| Heating Capacity                  | Btu/h                       | 12200 (5150 ~15400)                  | 18600 (8180~24530)                |
| HSPF4                             | Btu/w                       | 9.3                                  | 8.6                               |
| Air Flow Volume (Hi/Med/Lo)       | CFM                         | 370/325/270                          | 510/380/310                       |
| Static Pressure (Hi)              | Pa                          | 40                                   | 70                                |
| Indoor Noise Level (Hi/Mi/Lo)     | dB(A)                       | 40/36/33                             | 43/36/33                          |
| <b>ELECTRICAL PARTS</b>           |                             |                                      |                                   |
| Power Supply                      | V~,Hz,Ph                    | 230,60,1                             | 230,60,1                          |
| Minimum Circuit Ampacity          | A                           | 1.3                                  | 1.9                               |
| Max. Fuse                         | A                           | 15                                   | 15                                |
| <b>DIMENSION &amp; WEIGHT</b>     |                             |                                      |                                   |
| Net Dimension                     | mm                          | 700x635x210                          | 920x635x210                       |
| (WxDxH)                           | inch                        | 27.56x25x8.27                        | 36.22x25x8.27                     |
| Packing Dimension                 | mm                          | 915x655x290                          | 1135x655x290                      |
| (WxDxH)                           | inch                        | 36.02x25.79x11.42                    | 44.68x25.79x11.42                 |
| Net Weight                        | kg/lbs                      | 20/44.09                             | 22.5/50.71                        |
| Gross Weight                      | kg/lbs                      | 25/55.12                             | 27.5/63.93                        |
| Piping Size (mm(inch))            | Liquid                      | Ø6.35 (1/4")                         | Ø6.35 (1/4")                      |
|                                   | Gas                         | Ø12.7 (1/2")                         | Ø12.7 (1/2")                      |
|                                   | Drainage                    | ODØ25 (1")                           | ODØ25 (1")                        |

# Free-Match Console

## Standard Features



| SPECIFICATION                 |                             |  |                               |
|-------------------------------|-----------------------------|--|-------------------------------|
| Model No.                     | Indoor Unit<br>Outdoor Unit | MFAU-12HRFN1-M /<br>MFAU-12HRFN1-M(B)<br>MOZ-12HFN1-MS0W | MUE-36HRFN1-M<br>MOU-36HFN1-M |
| CAPACITY & PERFORMANCE        |                             |  |                               |
| Cooling Capacity              | Btu/h                       | 12000 (4770~13980)                                       | 36000                         |
| SEER                          | Btu/w                       | 17.6   | 15                            |
| Heating Capacity              | Btu/h                       | 12000 (4770~16710)                                       | 36000                         |
| HSPF4                         | Btu/w                       | 10   | 9.0                           |
| HSPF5                         |                             | -  | 7.5                           |
| Indoor Noise Level (Hi/Mi/Lo) | dB(A)                       | 41/32/29.5   | 55/48/41                      |
| ELECTRICAL PARTS              |                             |  |                               |
| Power Supply                  | V~,Hz,Ph                    | 230,60,1   | 208-230-1-60                  |
| Minimum Circuit Ampacity      | A                           | 1.3  | 1.9                           |
| Max. Fuse                     | A                           | 15   | 15                            |
| DIMENSION & WEIGHT            |                             |  |                               |
| Net Dimension                 | mm                          | 700x210x600  | 1285x675x235                  |
| (WxDxH)                       | inch                        | 27.56x28.27x23.6   | 50.59x26.57x9.25              |
| Packing Dimension             | mm                          | 810x305x710  | 1360x755x313                  |
| (WxDxH)                       | inch                        | 31.89x12.01x27.95  | 53.54x29.72x12.32             |
| Net Weight                    | kg/lbs                      | 15/33.07   | 30/66.14                      |
| Gross Weight                  | kg/lbs                      | 20/44.09   | 35/77.16                      |
| Piping Size (mm(inch))        | Liquid                      | 6.35 (1/4")  | 9.52 (3/8")                   |
|                               | Gas                         | 12.7 (1/2")  | 15.9 (5/8")                   |
|                               | Drainage                    | OD16 (5/8")  | OD25 (1")                     |

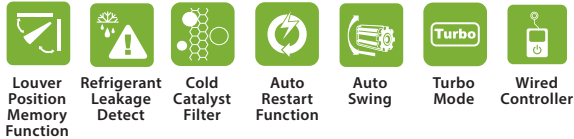


**2 Optional Air Outlet Ways**  
Both up and down air-outlet or up air-outlet only.

**4 Directions Air-Inlet**

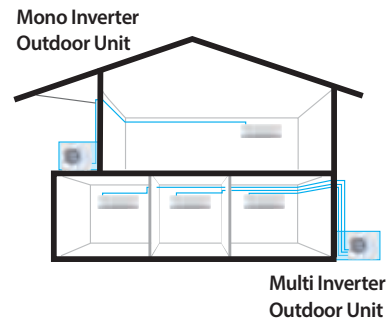
# Free-Match, Indoor Highwall Oasis ES Series

## Standard Features



| SPECIFICATION                 |             |                    |                    |                    |                     |
|-------------------------------|-------------|--------------------|--------------------|--------------------|---------------------|
| Model No.                     | Indoor Unit | MS11M-09HRFN1-MX5W | MS11M-12HRFN1-MW0W | MS11M-18HRFN1-MU0W | MS11M-24HRDN1-MT0W* |
| CAPACITY & PERFORMANCE        |             |                    |                    |                    |                     |
| Cooling Capacity              | °C / °F     | 17~32 / 62~90      | 17~32 / 62~90      | 17~32 / 62~90      | 17~32 / 62~90       |
| Heating Capacity              | °C / °F     | 0~30 / 32~86       | 0~30 / 32~86       | 0~30 / 32~86       | 0~30 / 32~86        |
| Indoor air flow (Hi/Mi/Lo)    | m3/h        | 750/650/450        | 750/650/450        | 1200/950/750       | 1450/1300/1050      |
| Indoor air flow (Hi/Mi/Lo)    | CFM         | 440/380/260        | 440/380/260        | 710/560/440        | 850/770/620         |
| Indoor Noise Level (Hi/Mi/Lo) | dB(A)       | 42/37/34           | 43/37/31           | 47/40/31           | 50/45/40            |
| ELECTRICAL PARTS              |             |                    |                    |                    |                     |
| Power Supply                  | V~,Hz,Ph    | 208-230,60,1       | 208-230,60,1       | 208-230,60,1       | 208-230,60,1        |
| DIMENSION & WEIGHT            |             |                    |                    |                    |                     |
| Net Dimension                 | mm          | 835x198x280        | 835x198x280        | 990x218x315        | 1186 x 258 x 343    |
| (WxDxH)                       | inch        | 32.87x7.80x11.02   | 32.87x7.80x11.02   | 38.98x8.58x12.40   | 46.69x10.16x13.39   |
| Packing Dimension             | mm          | 910x270x355        | 910x270x355        | 1065x300x400       | 1265/420/340        |
| (WxDxH)                       | inch        | 35.83x10.63x13.98  | 35.83x10.63x13.98  | 41.93x11.81x15.75  | 49.80x16.53x13.39   |
| Net Weight                    | kg/lbs      | 8.7/19.18          | 8.7/19.18          | 12/26.46           | 18.50/40.79         |
| Gross Weight                  | kg/lbs      | 11.2/24.69         | 11.2/24.69         | 14/30.86           | 23/50.71            |
| Piping Size (mm(inch))        | Liquid      | Ø6.35 (1/4")       | Ø6.35 (1/4")       | Ø6.35 (1/4")       | Ø9.52 (3/8")        |
|                               | Gas         | Ø9.52 (3/8")       | Ø9.52 (3/8")       | Ø12.7 (1/2")       | Ø15.9 (5/8")        |
| Thermostat type               |             | Remote Control     | Remote Control     | Remote Control     | Remote Control      |

\*MS11M-24HRDN1-MTOW Compatible with the M50C-48HFN1-M Outdoor Condensing Unit only.



**Mono & Multi Compatible**  
Compatible indoor unit for both mono and multi inverter system. It comes in handy for warehouse management.

***KoolKing***™